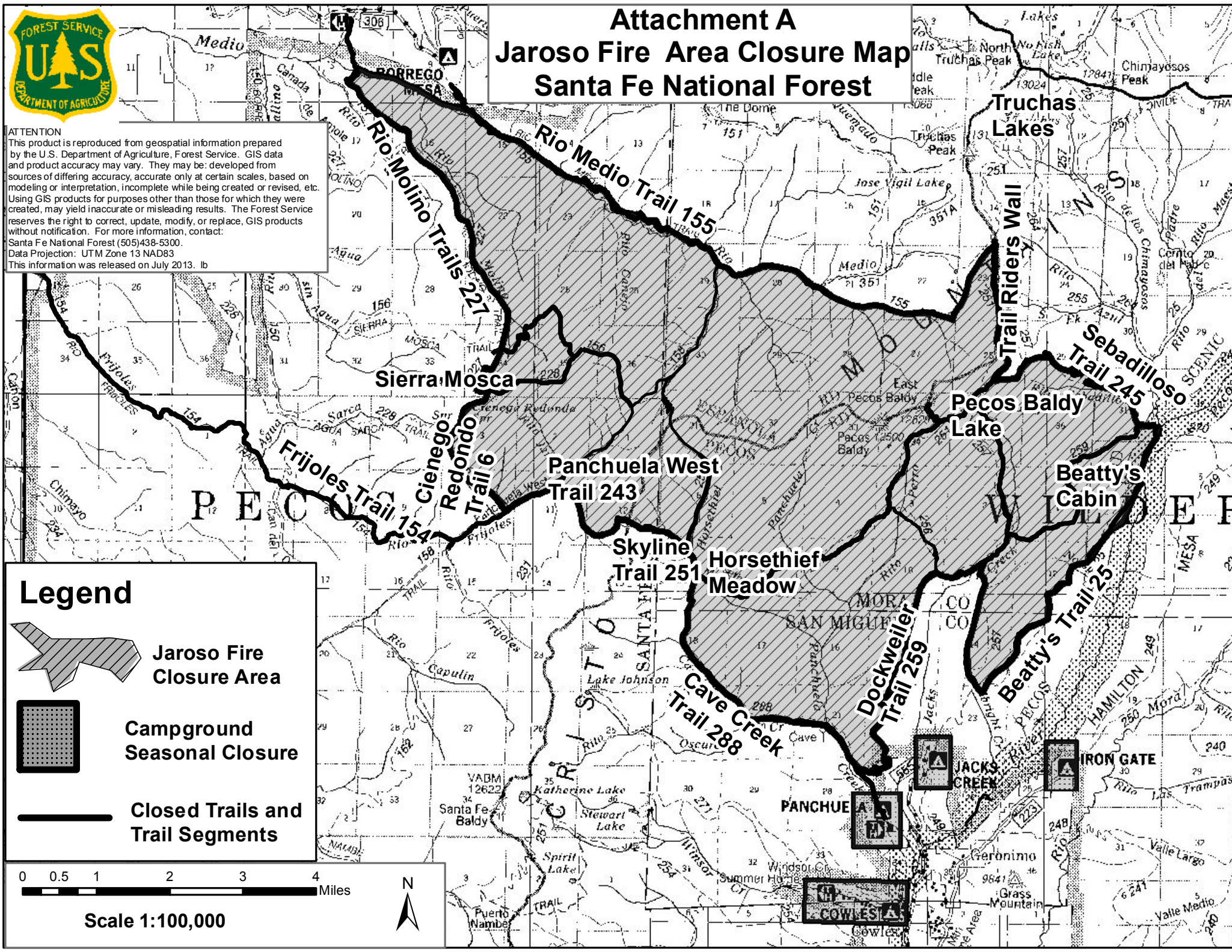


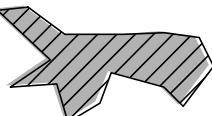
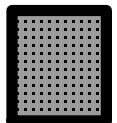



Attachment A Jaroso Fire Area Closure Map Santa Fe National Forest

ATTENTION
This product is reproduced from geospatial information prepared by the U.S. Department of Agriculture, Forest Service. GIS data and product accuracy may vary. They may be developed from sources of differing accuracy, accurate only at certain scales, based on modeling or interpretation, incomplete while being created or revised, etc. Using GIS products for purposes other than those for which they were created, may yield inaccurate or misleading results. The Forest Service reserves the right to correct, update, modify, or replace GIS products without notification. For more information, contact:
Santa Fe National Forest (505)438-5300.
Data Projection: UTM Zone 13 NAD83
This information was released on July 2013. lb



Legend

-  Jaroso Fire Closure Area
-  Campground Seasonal Closure
-  Closed Trails and Trail Segments

